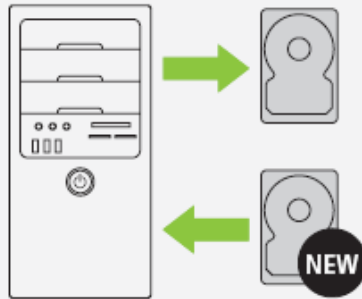


### Follow these steps to perform a full system recovery:

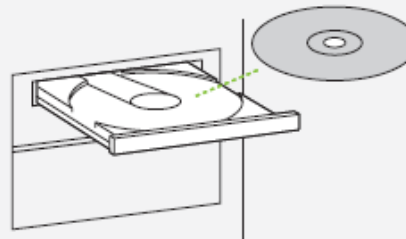
1



If you are replacing a hard drive, install the new one according to the instructions in your computer's user guide. When replacing the drive, ensure that it is as large in capacity as the original drive. Otherwise, if you are recovering your data to your current drive, move on to step 2.

**Warning:** Any data on the destination drive will be overwritten during the recovery process.

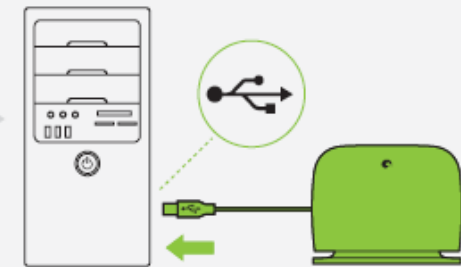
2



Insert your Replica™ Backup System Recovery CD in the CD/DVD drive as follows:

- Turn on your computer long enough to open the CD/DVD drive and insert the Replica Backup System Recovery CD.
- Close the CD/DVD drive.
- Turn off your computer.

3



Connect the Replica Backup System directly to your computer.

**Note:** If you are restoring a laptop computer, make sure it is connected to a power source.